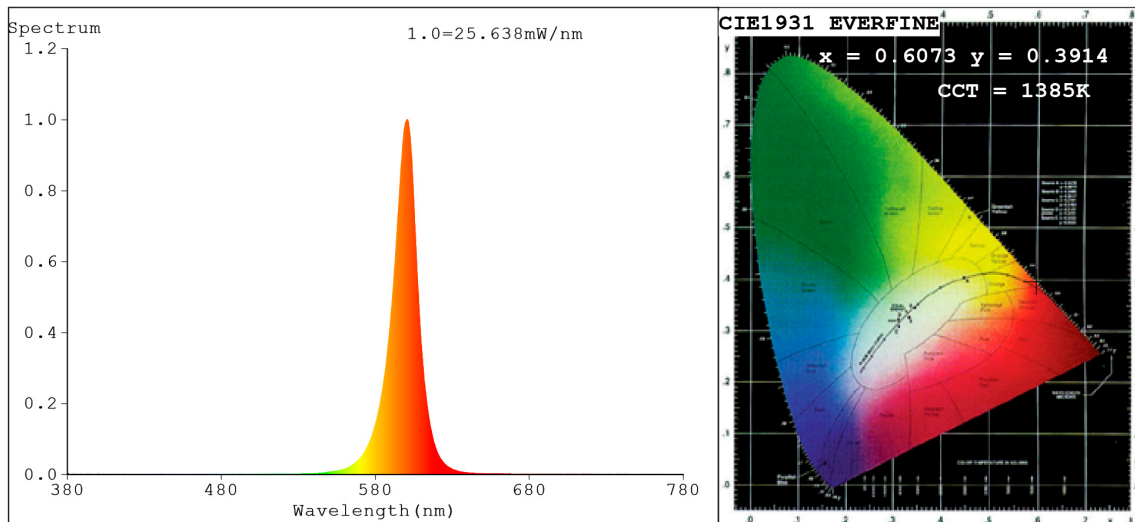


## Spectrum Test Report



### Color Parameters:

Chromaticity Coordinate:  $x=0.6073$   $y=0.3914$  /  $u'=0.3747$   $v'=0.5434$   
 $CCT=1385K$  ( $Duv=-0.0025$ ) Dominant WL:  $L_d = 596.0nm$  Purity=99.8%  
 Ratio:  $R=40.6\%$   $G=59.4\%$   $B=0.0\%$ ; Peak WL:  $L_p=600.7nm$  FWHM=16.8nm  
 Render Index:  $R_a=17.0$  CRI=17.8 TM30:  $R_f=1$   $R_g=7$   
 $R1 = 0$   $R2 = 61$   $R3 = 17$   $R4 = 0$   $R5 = 0$   $R6 = 59$   $R7 = 0$   
 $R8 = 0$   $R9 = 0$   $R10=44$   $R11=0$   $R12=21$   $R13=0$   $R14=48$   $R15=0$

### Photo Parameters:

Flux = 236.4 lm Eff. : 20.77 lm/W Fe = 534.9 mW Scotopic: 46.224 S/P: 0.19557

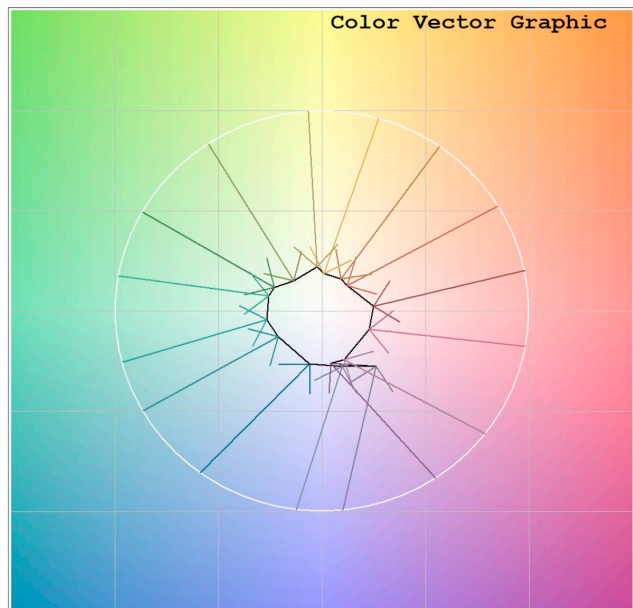
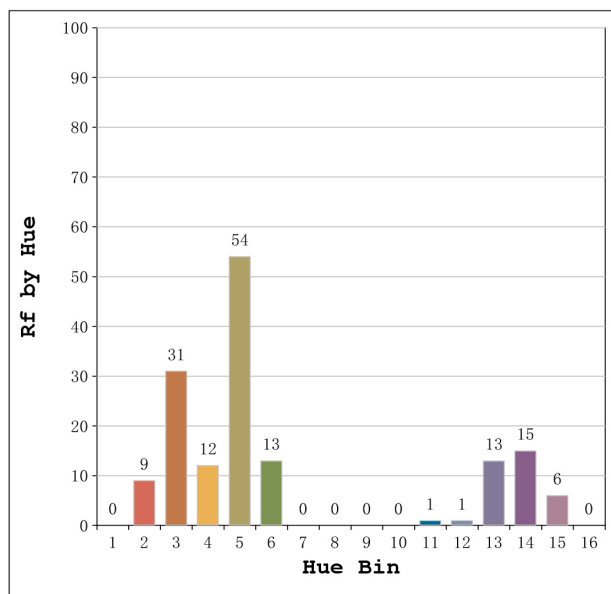
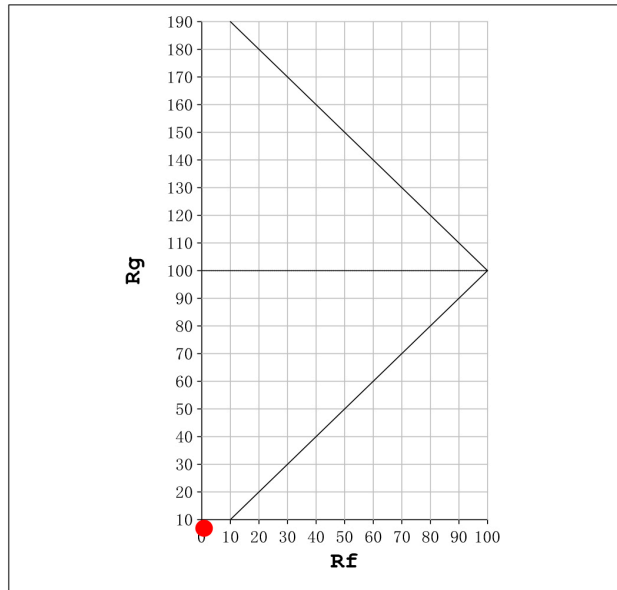
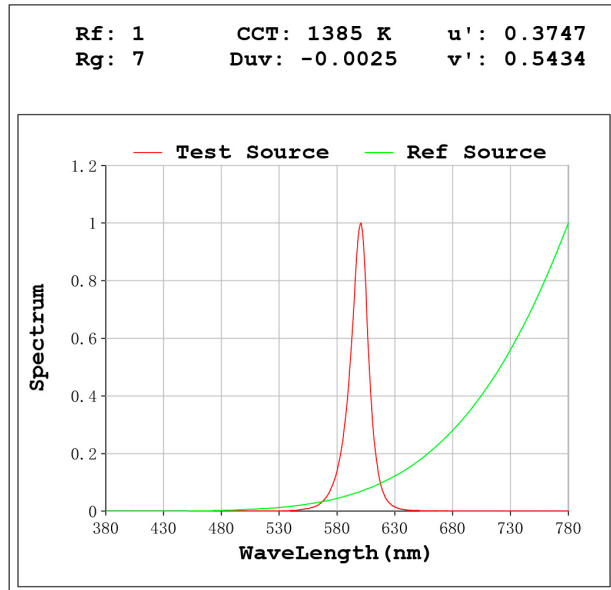
### Electrical parameters:

V = 11.998 V I = 0.9486 A P = 11.38 W PF = 1.000

Status: Integral T = 718 ms Ip = 48751 (74%)

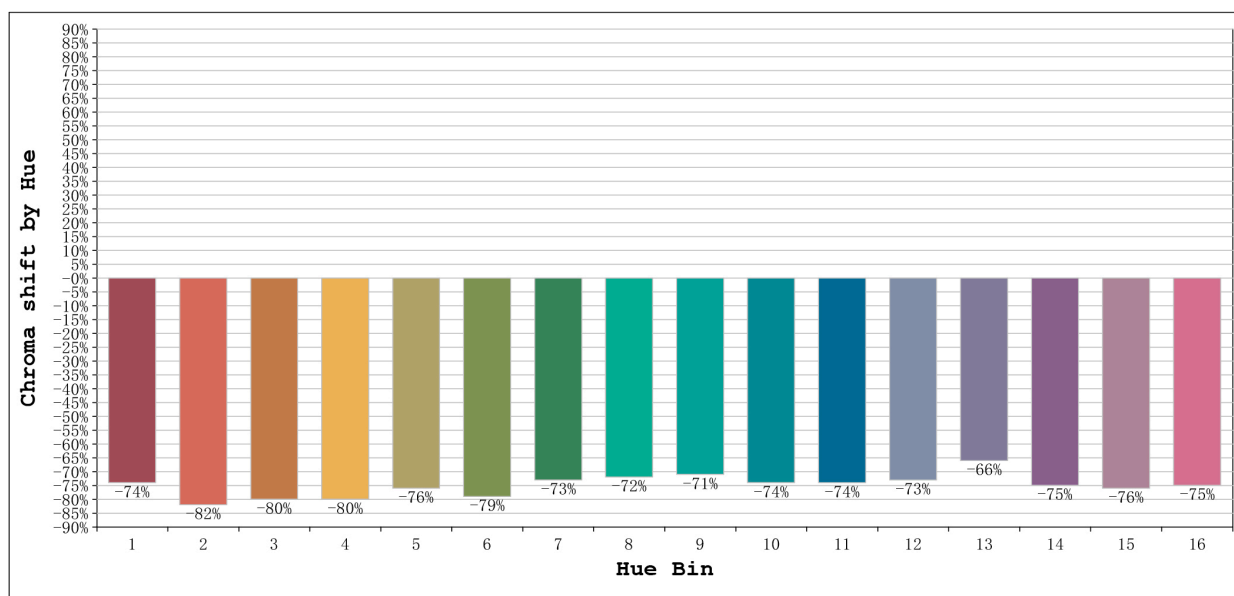
Model: Ecoled Ávila Ámbar  
 Tester: Sergio Carneros  
 Temperature: 20Deg  
 Manufacturer: Luz Negra

Number: 32.079  
 Date: 2021-10-07 09:57:50  
 Humidity: 50%  
 Remarks: 100cm de tira flexible



Model:Ecoled Ávila Ámbar  
 Tester:Sergio Carneros  
 Temperature:20Deg  
 Manufacturer:Luz Negra

Number: 32.079  
 Date:2021-10-07 09:57:50  
 Humidity:50%  
 Remarks:100cm de tira flexible



			Graphic shift(%)	
Hue Bin	Hue Angle	Rf	Chroma	Hue
1	0.0° - 22.5°	0	-74	-2
2	22.5° - 45.0°	9	-82	8
3	45.0° - 67.5°	31	-80	3
4	67.5° - 90.0°	12	-80	11
5	90.0° - 112.5°	54	-76	11
6	112.5° - 135.0°	13	-79	4
7	135.0° - 157.5°	0	-73	-3
8	157.5° - 180.0°	0	-72	-3
9	180.0° - 202.5°	0	-71	-6
10	202.5° - 225.0°	0	-74	5
11	225.0° - 247.5°	1	-74	14
12	247.5° - 270.0°	1	-73	8
13	270.0° - 292.5°	13	-66	29
14	292.5° - 315.0°	15	-75	-9
15	315.0° - 337.5°	6	-76	-6
16	337.5° - 360.0°	0	-75	-5

Model:Ecoled Ávila Ámbar  
Tester:Sergio Carneros  
Temperature:20Deg  
Manufacturer:Luz Negra

Number: 32.079  
Date:2021-10-07 09:57:50  
Humidity:50%  
Remarks:100cm de tira flexible